

Joint Meeting – Port of Tacoma Commission and Fife City Council

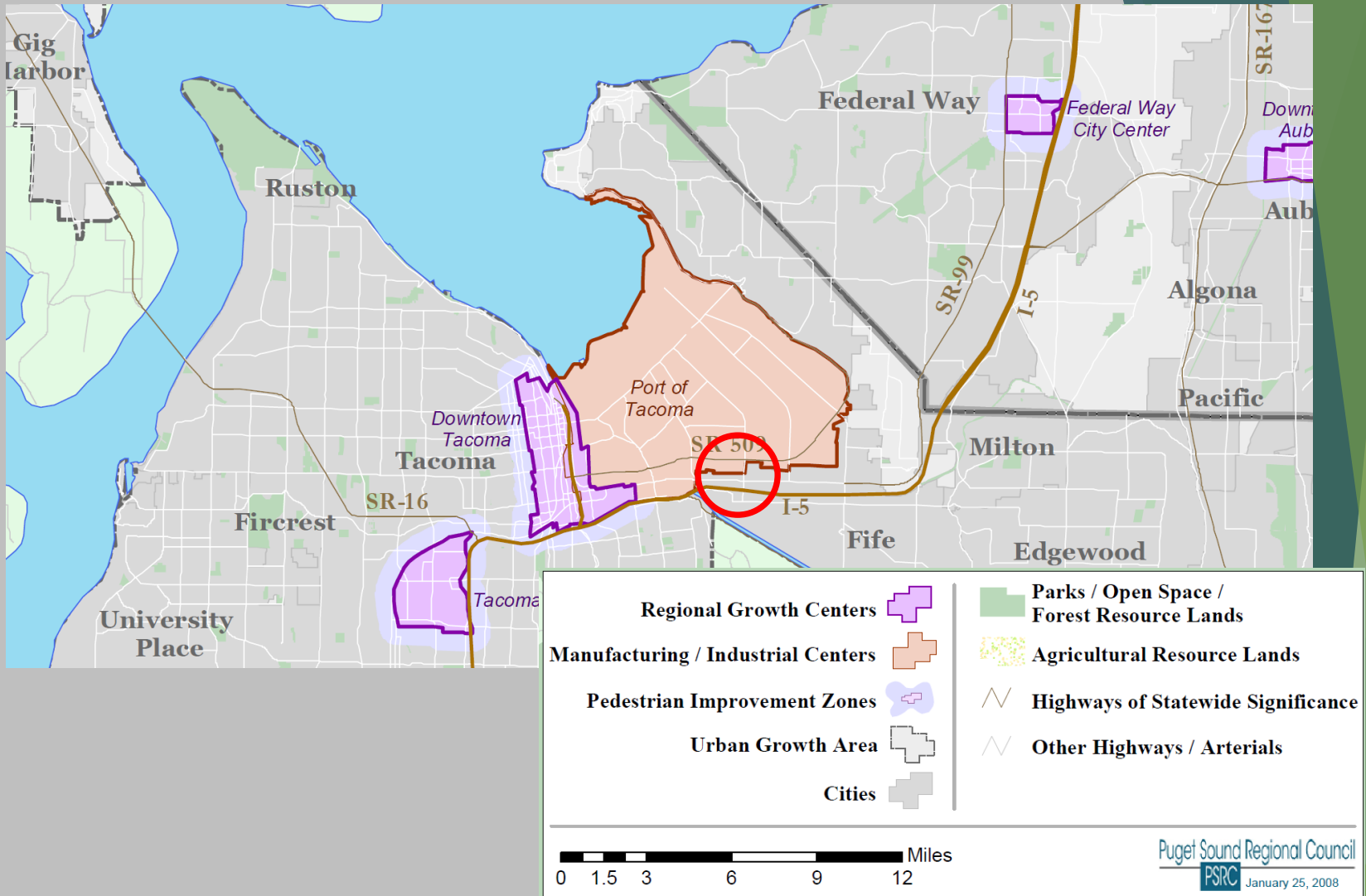
Port of Tacoma Road / I-5 Interchange Project Update

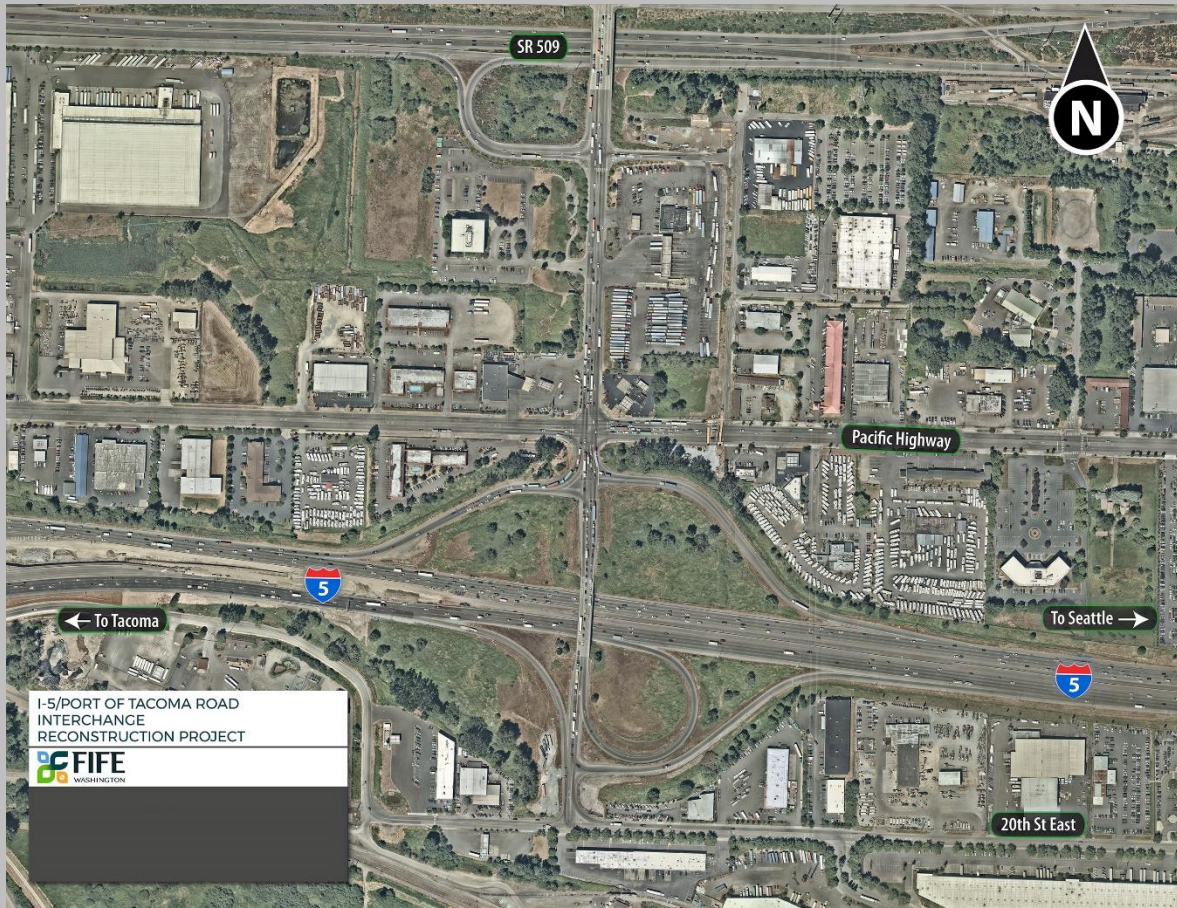
October 5, 2022

Project Vicinity

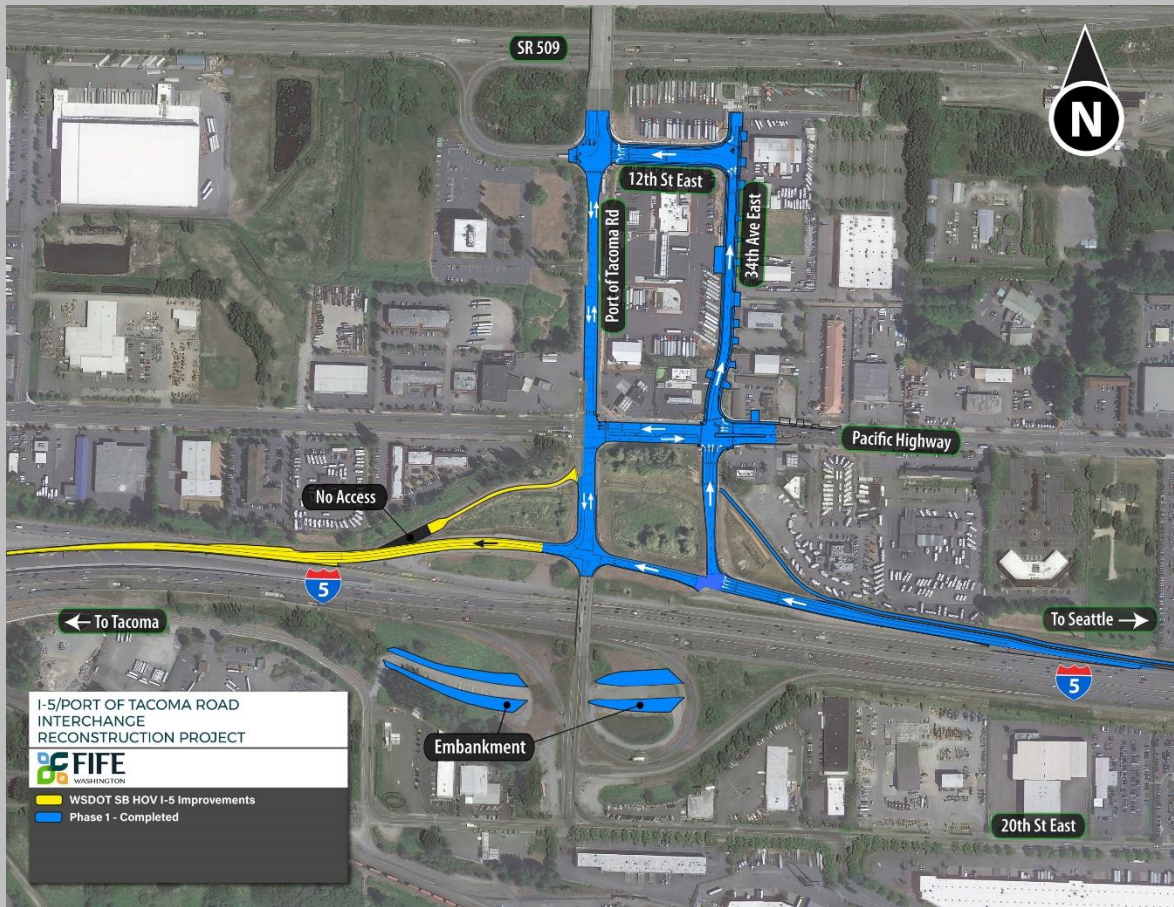


Manufacturing/Industrial Center





The Site Prior to Construction

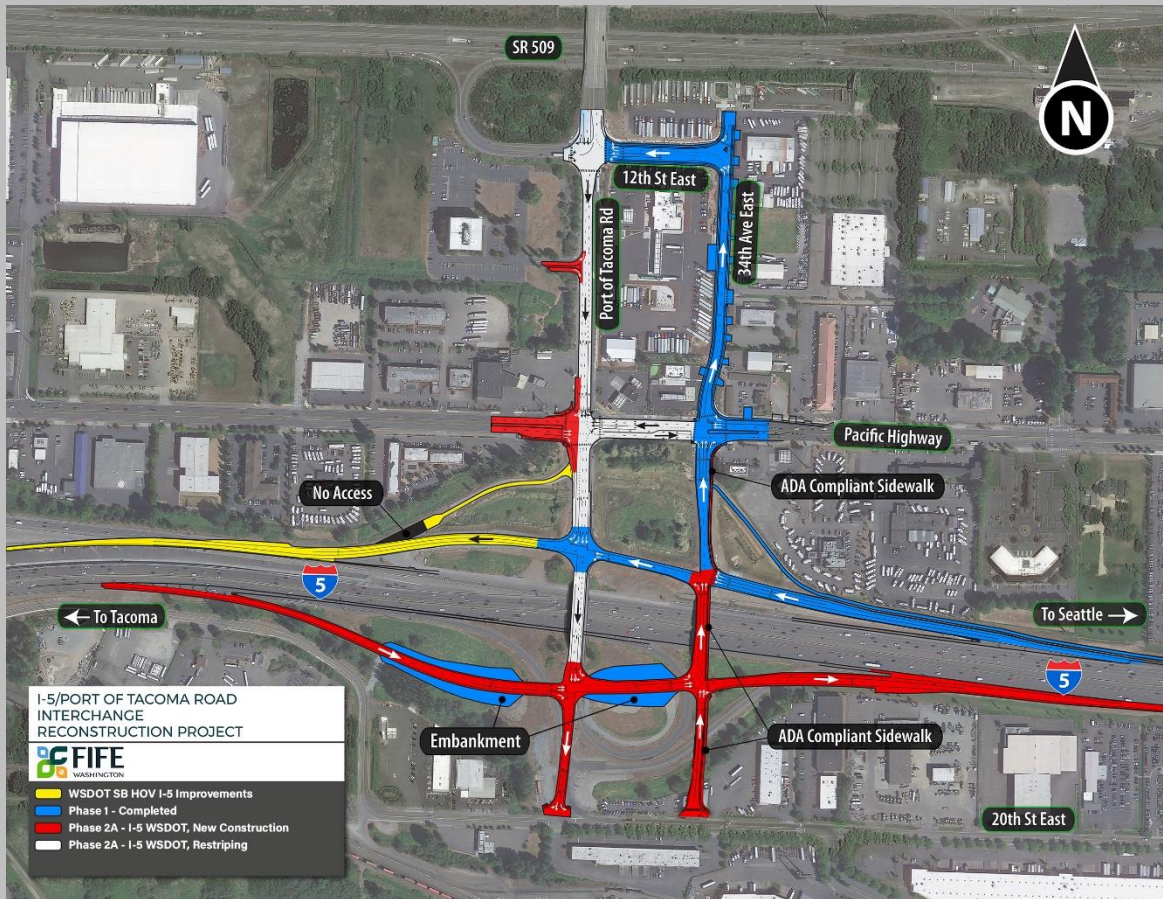


Phase I Completed in 2020

- Completed new southbound off-ramp, one-way 34th Ave to 12th St, one-way 12th St to Port of Tacoma Rd, and related improvements
- \$44 million project cost included contributions of \$11.5 million from the City and \$1.5 million from the Port

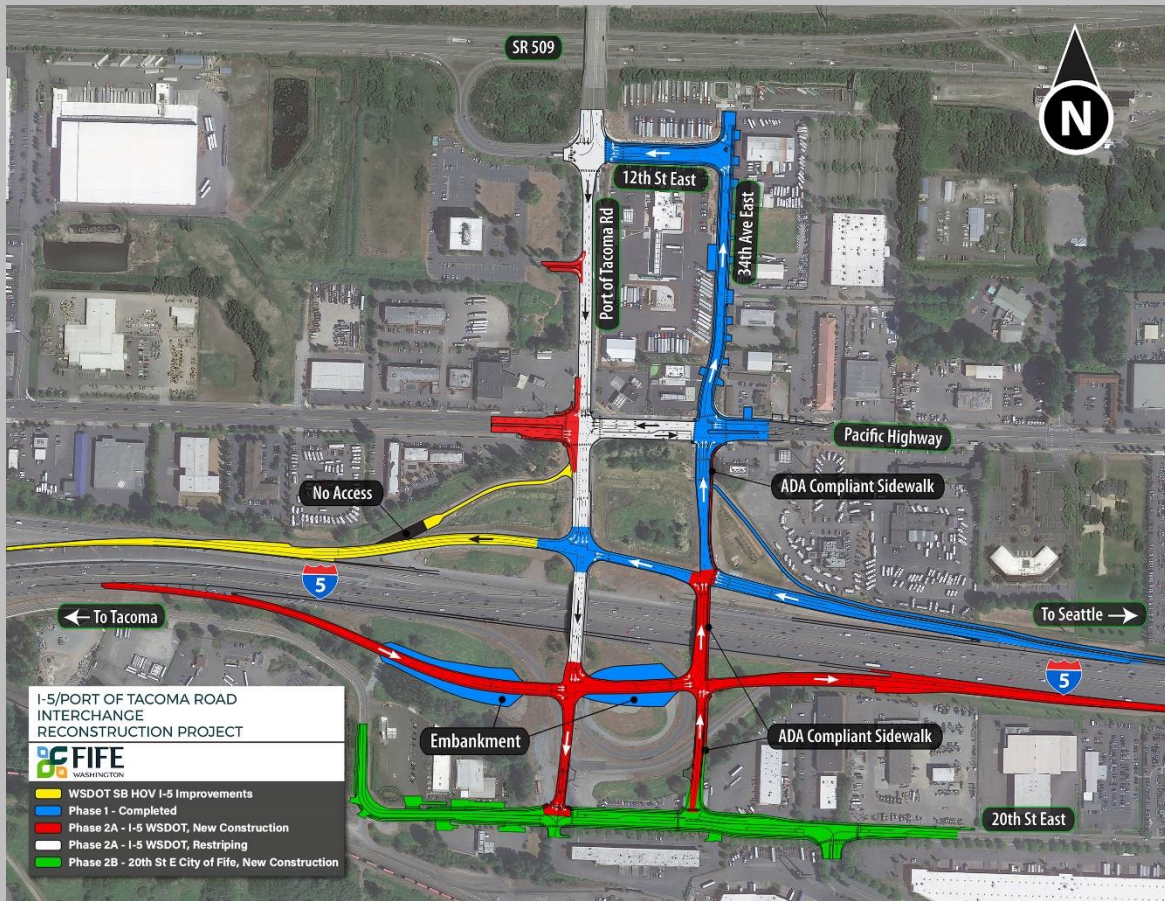
Completed Phase I – I-5/Port of Tacoma Rd Interchange





Phase II Shovel-ready Summer 2023

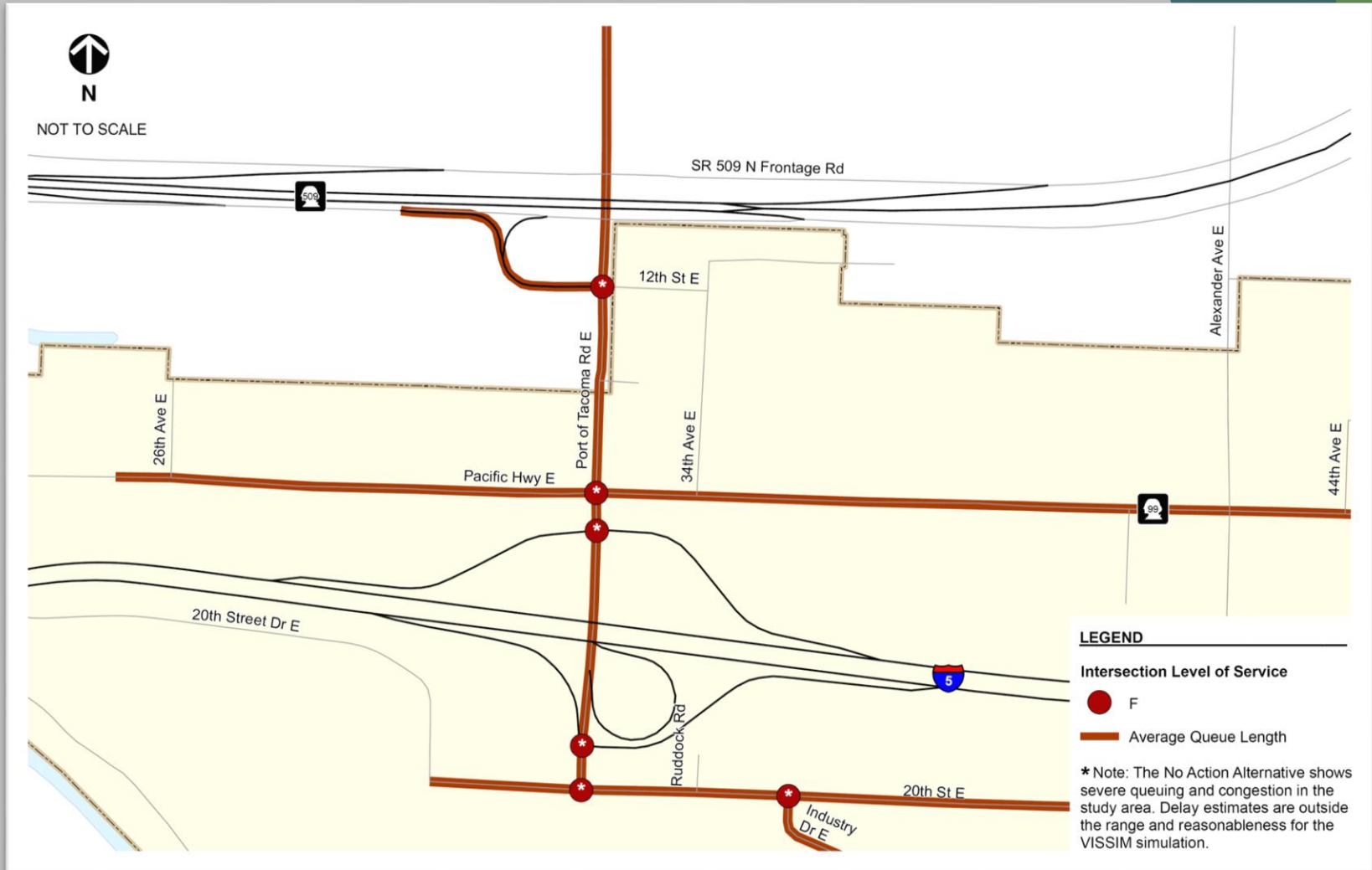
- This phase will construct new northbound on and off-ramps, a new bridge over I-5 at 34th Ave, convert Port of Tacoma Rd to one-way southbound, and related improvements
- For this est. \$51 million project, the City will contribute at least \$3.2 million; we are asking for a \$2 million commitment from the Port; pay later



Phase II-B Shovel-ready 2025

- This final phase will complete work on 20th St including road widening, sidewalks, traffic signals at Port of Tacoma Rd, 34th Ave, and Industry Dr, and related improvements
- The est. \$23 million phase currently has an approximate \$4 million shortfall with a pending request through Sen. Murray's office

2040 No-Action



2040 with Diamond Couplet

Freeway Travel Time

I-5 SB: SR 18 On-Ramp to I-705 Off-Ramp	10:36
I-5 NB: I-705 On-Ramp to SR 18 Off-Ramp	10:36

Arterial Travel Time

EB Pacific Hwy: 1,500' west of Port of Tacoma to Alexander	2:34
WB Pacific Hwy: Alexander to 1,500' west of Port of Tacoma Road	2:25



Support for Port Activities

- ▶ Enhances the first/last mile connection to the fourth largest marine gateway for containerized cargo in the nation
- ▶ Interchange enhancements modernize traffic engineering solutions to improve movement of goods and people
- ▶ Businesses and industry are unhindered by gridlock
- ▶ Residents have better access to jobs, educational opportunities, and services

Project Funding Summary

- ▶ Estimated \$119 million project for all three phases
- ▶ \$81.1 million in state funding (TIB, FMSIB, Connecting WA, Move Ahead WA)
- ▶ \$12.4 million in federal funding (STP and SAFETEA-LU)
- ▶ **\$17.1 million in City funds**
- ▶ \$4 million reasonably expected from Sen. Murray (Phase II-B)
- ▶ \$1.8 million contribution from the Port, Ecology, and Loves for Phase I
- ▶ **Requesting a \$2 million commitment from the Port for Phase II**

Questions?

